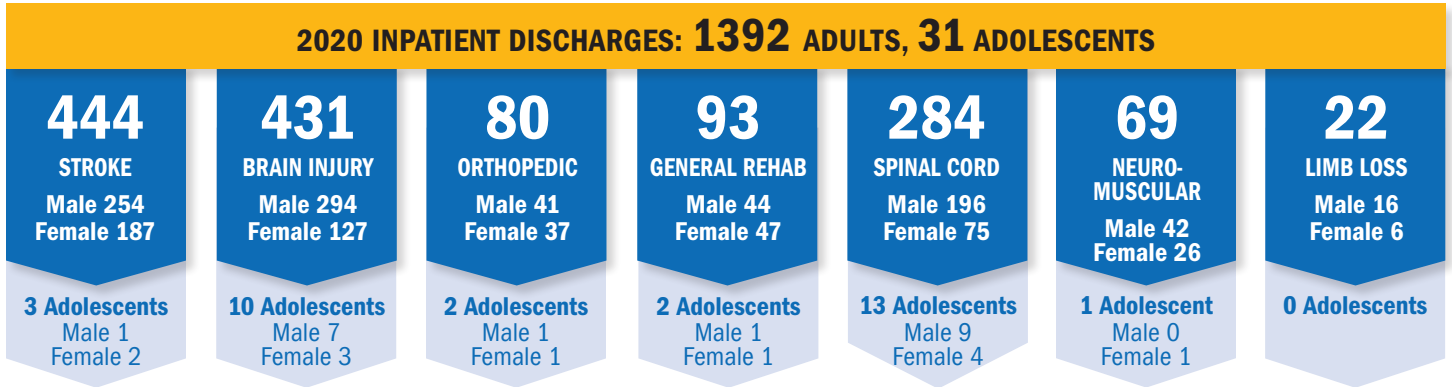


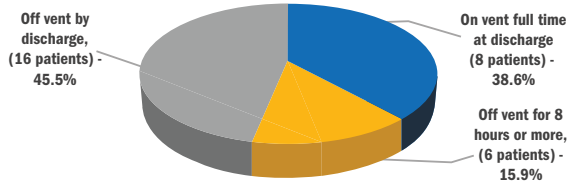
At TIRR Memorial Hermann, our patients come first. We provide care to patients who are either recovering from injuries, or suffering from chronic diseases that have impaired their physical or cognitive functioning. With a focus on personalized, patient-centered care, our hospital offers access to advanced, innovative rehabilitation services.

**INPATIENTS SERVED IN 2020**

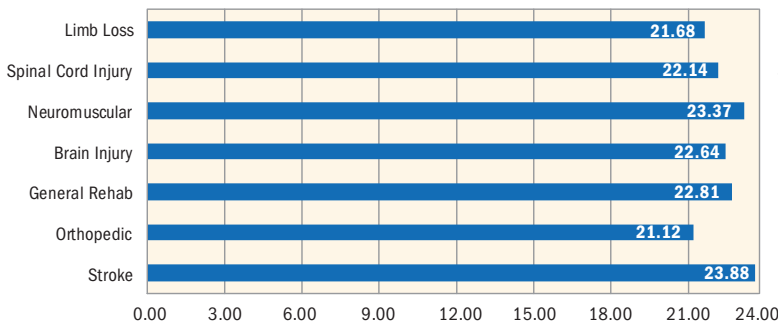


The TIRR Memorial Hermann Spinal Cord Injury (SCI) program is well known for its management of patients who require the use of a ventilator. While not all patients will be clinically appropriate for weaning, our goal is to wean SCI patients from the ventilator prior to discharge.

**Vent Weaning Status (44 Patients)**

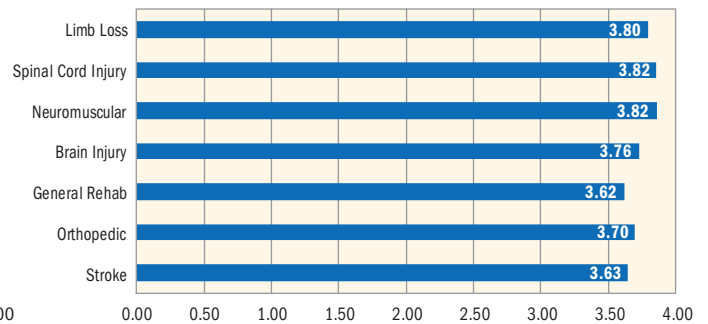


**Therapy Services**



**Individualized & Group Therapy**  
Shown in hours and minutes, per patient, per week  
**ALL Patients**

**Patient Satisfaction**



**Overall satisfaction with the program**  
(Scale 0.00 - 4.00)

Along with individual and group therapy sessions, the hospital's weekend program also offers classes focused on family education and additional therapy needs as well as group and leisure activities; providing the necessary time and resources for our patients to achieve their discharge goals.

Patient satisfaction surveys are one of the ways we measure how effective our programs are in helping patients achieve their functional independence goals and return to their communities.

Data obtained from IT HealthTrack for the reporting period CY 2020.

(over)

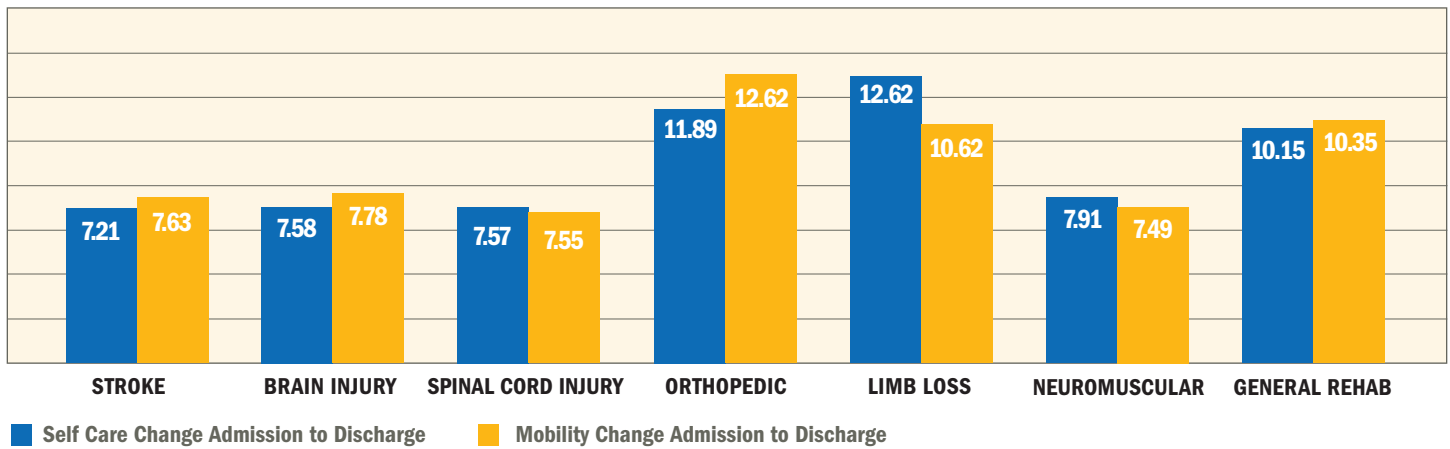
Data obtained from e-Rehab for reporting period CY2020. Stats include all patients.

TIRR Memorial Hermann inpatient rehabilitation center is designed to help patients reach optimal functionality following an injury or illness. Personal performance goals are incorporated into a customized rehabilitation treatment program. Team members at TIRR Memorial Hermann are highly trained and experienced rehabilitation professionals.

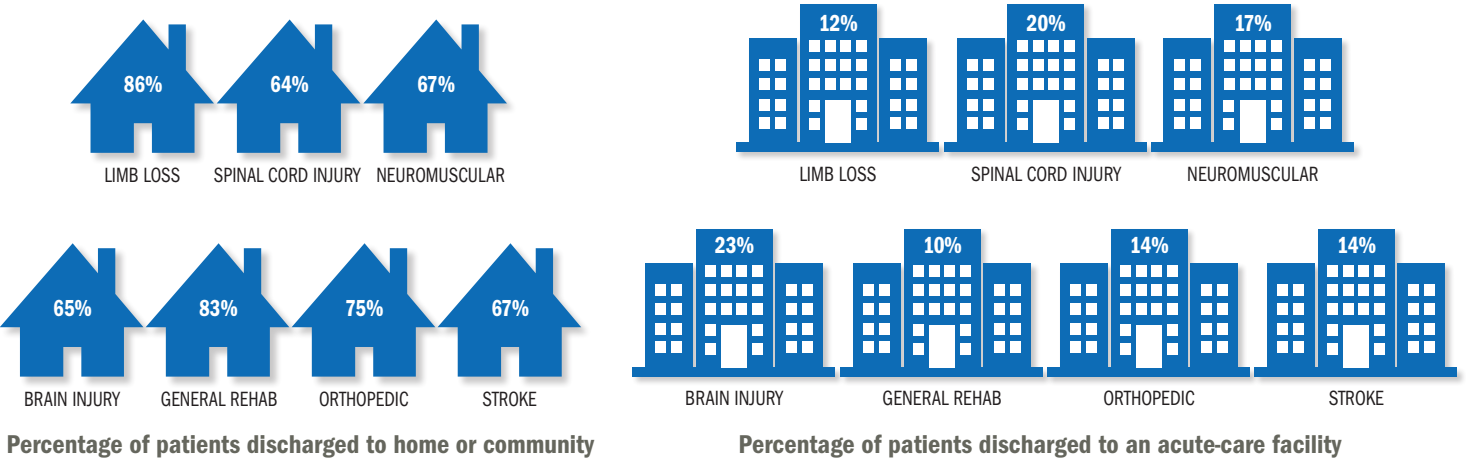
**REHABILITATION OUTCOMES**

The self-care and mobility outcome measures are used to assess the progress of a patient’s functional skills such as dressing, bathing and eating. They are also used to measure the effectiveness of rehabilitative care delivered by the rehab team and the effectiveness of the rehab program. This score is measured upon admission and right before discharge. The difference between the two scores represents the patient’s functional gains achieved in response to an inpatient rehabilitation therapy program.

**TIRR Memorial Hermann Program Effectiveness**



**DISCHARGE LOCATION**



Data obtained from E-Rehab for the reporting period of CY 2020.

Sometimes patients with medical complications have to return to an acute-care hospital for further medical care. When these transfers are not planned, they are defined as an unplanned acute-care admission.

